



RØLLIKEBAKKEN

LEJLIGHEDER I SØBAKKEHUSENE





Vejledende visualisering. Der tages forbehold for fejl og ændringer.

VELKOMMEN TIL RØLLIKEBAKKEN

I Røllikebakken bor du i den nordøstlige del af Søbakkehusene, i et byggeri med fokus på gedigne materialer, adgang til grønne fællesarealer og natur, og ikke mindst din komfort som beboer.

Byggeriets arkitektur afspejler sin placering i det bakkede og varierede landskab. Her harmonerer de forskudte facader, farvevalg og materialer, i blandt andet træ og beton, med naturens egne nuancer. Grønne klatreplanter og trælameller på dele af bebyggelsen får byggeri og natur til at smelte sammen, og bringer spil og liv til bygningens facader.

Din bolig er placeret i en af de to etageejendomme på tre til fem etager, og er optimalt orienteret mod øst-vest, så du altid får glæde af dagslyset. Ejendommenes gavlboliger mod syd, kan desuden nyde godt af sollyset

fra de sydvendte vinduer eller altan. Hjertet i boligen er det rumlige køkken-alrum og opholdsstue, hvor egetræsgulve, neutrale farver og kvalitetsmaterialer, som i resten af boligen, giver et lyst og imødekommende udtryk. Fra din bolig har du adgang til en eller to altaner. Gulvene her er beklædt med det rødbrune, varme og slidstærke Cumaru-træ. Bor du i en stueejlighed, har du fra din altan desuden adgang til din egen private have*.

I Røllikebakken bliver det nemt at leve livet under åben himmel. Her har du, udover dine private udearealer, adgang til det dejlige, åbne fællesareal med opholdsområder samt legeområder, der favner både større og mindre børn. Og bevæger du dig en tur rundt i området, vil du hurtigt støde på Salamandersøen - et lille åndehul ved Søbakkehusene

Som bilist har du nem adgang til Røllikebakken fra vejen. Nærhedens ene parkeringshus ligger i direkte forlængelse af bygningen, så du kan parkere inden for en fin gåafstand til din bolig. Hertil findes desuden flere parkeringspladser i gadeplan til fri afbenyttelse. Desuden er der god adgang til offentlig transport med Hedehusene Station lige inden for rækkevidde. Herfra kan du komme med tog til København på 20 minutter og Roskilde på blot 5 minutter.

**En enkelt stueejlighed har ikke tilknyttet egen have.*

RØLLIKEBAKKENS EJERLEJLIGHEDER

Antal boliger: **32**
Boligstørrelser: **57-125 kvadratmeter**
Antal værelser: **2-5**



SØBAKKEHUSENE
HYLDEBAKKEN



SØBAKKEHUSENE
KAMILLEBAKKEN

SØBAKKEHUSENE
KORNBLOMSTBAKKEN

SØBAKKEHUSENE
VALMUEBAKKEN

SØBAKKEHUSENE
RØLLIKEBAKKEN







Vejledende visualisering. Der tages forbehold for fejl og ændringer.

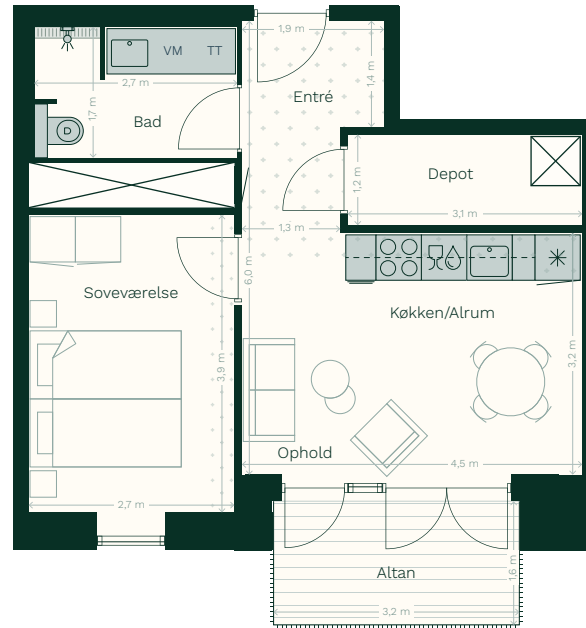
BOLIGTYPE LH.2V.01

BOLIGNUMMER 25, 28 & 31

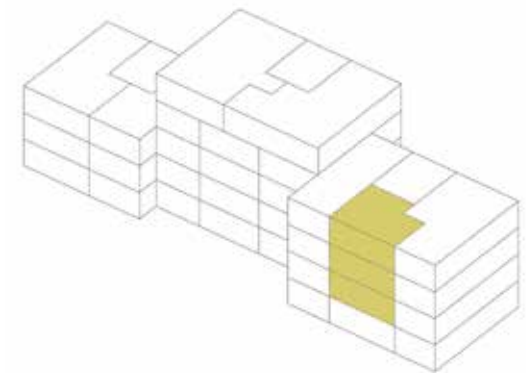
BRUTTOAREAL 57 M²
 ANTAL VÆRELSESR 2
 ALTAN 5 M²
 NIVEAU 1. SAL / 2. SAL / 3. SAL

SIGNATURFORKLARING

-  Komfur
-  Kølefryseskab
-  Vask
-  Opvaskemaskine
-  Overskabe
-  Vaskemaskine
-  Tørretumbler
-  Teknik
-  Indretningsforslag
-  Nedhængt loft/rørkasse



PLACERING








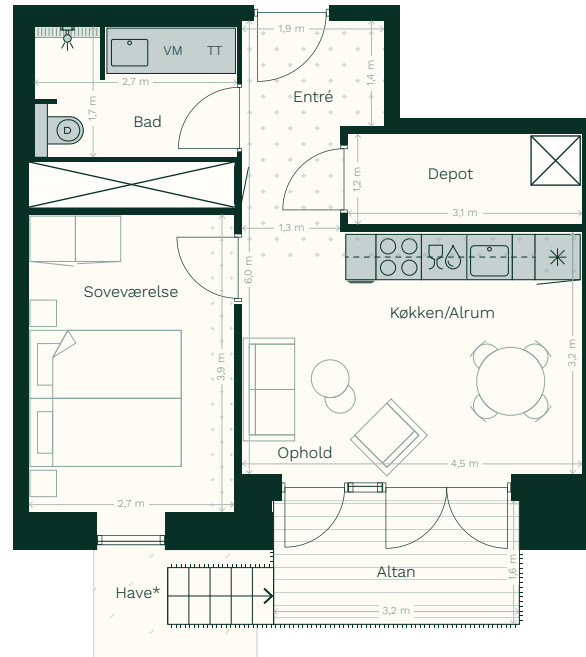
BOLIGTYPE LH.2V.01(A)

BOLIGNUMMER 22

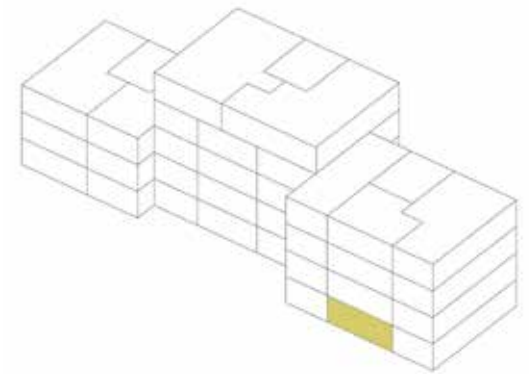
BRUTTOAREAL 57 M²
 ANTAL VÆRELSESR 2
 ALTAN 5 M²
 HAVE 4 M²
 NIVEAU STUEN

SIGNATURFORKLARING

-  Komfur
-  Kølefryseskab
-  Vask
-  Opvaskemaskine
-  Overskabe
-  Vaskemaskine
-  Tørretumbler
-  Teknik
-  Indretningsforslag
-  Nedhængt loft/rørkasse



PLACERING











Vejledende visualisering. Der tages forbehold for fejl og ændringer.

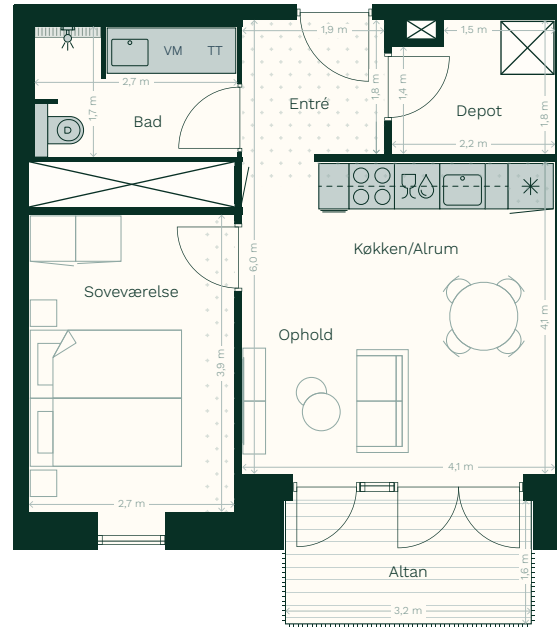
BOLIGTYPE LH.2V.02

BOLIGNUMMER 11, 14 & 17

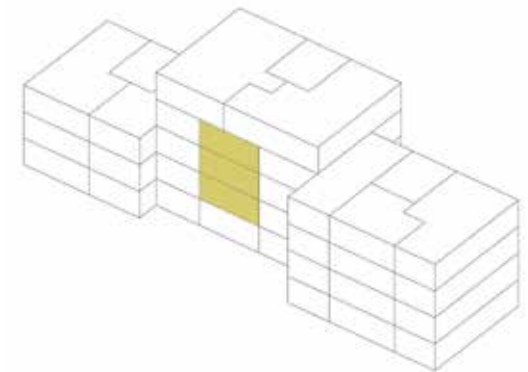
BRUTTOAREAL 58 M²
 ANTAL VÆRELSESR 2
 ALTAN 5 M²
 NIVEAU 1. SAL / 2. SAL / 3. SAL

SIGNATURFORKLARING

-  Komfur
-  Kølefryseskab
-  Vask
-  Opvaskemaskine
-  Overskabe
-  Vaskemaskine
-  Tørretumbler
-  Teknik
-  Indretningsforslag
-  Nedhængt loft/rørkasse



PLACERING













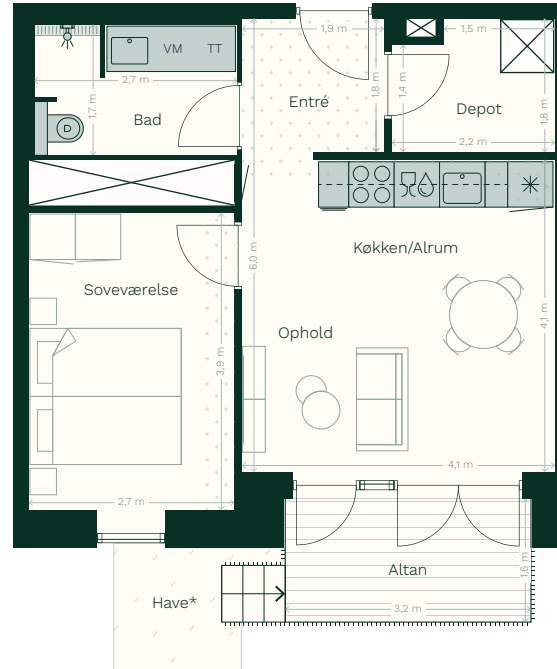
BOLIGTYPE LH.2V.02(A)

BOLIGNUMMER 8

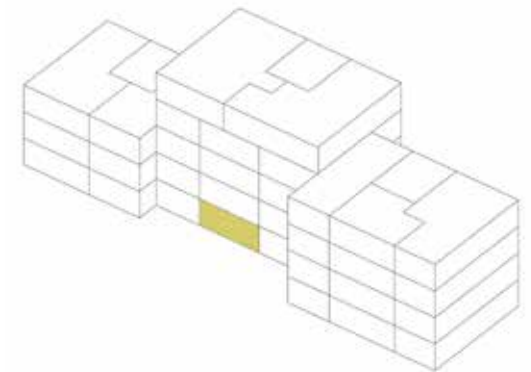
BRUTTOAREAL 58 M²
 ANTAL VÆRELSESR 2
 ALTAN 5 M²
 HAVE 4 M²
 NIVEAU STUEN

SIGNATURFORKLARING

-  Komfur
-  Kølefryseskab
-  Vask
-  Opvaskemaskine
-  Overskabe
-  Vaskemaskine
-  Tørretumbler
-  Teknik
-  Indretningsforslag
-  Nedhængt loft/rørkasse



PLACERING



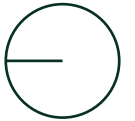
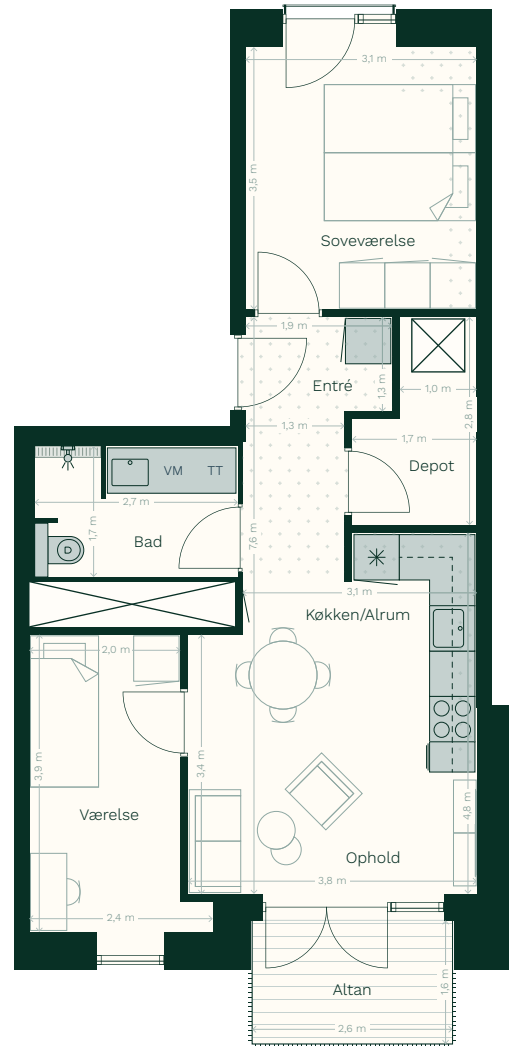
BOLIGTYPE LH.2V.03

BOLIGNUMMER 3 & 5

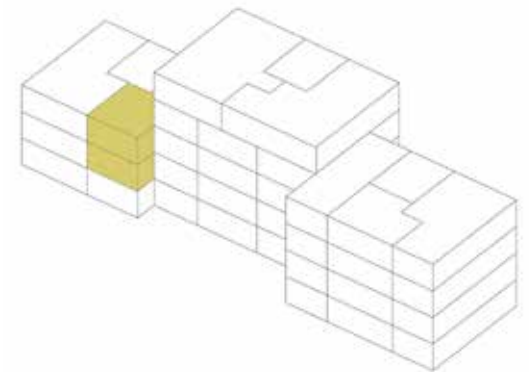
BRUTTOAREAL 75 M²
 ANTAL VÆRELSESR 3
 ALTAN 4 M²
 NIVEAU 1. SAL / 2. SAL

SIGNATURFORKLARING

-  Komfur
-  Kølefryseskab
-  Vask
-  Opvaskemaskine
-  Overskabe
-  Vaskemaskine
-  Tørretumbler
-  Teknik
-  Indretningsforslag
-  Nedhængt loft/rørkasse



PLACERING











Vejledende visualisering. Der tages forbehold for fejl og ændringer.

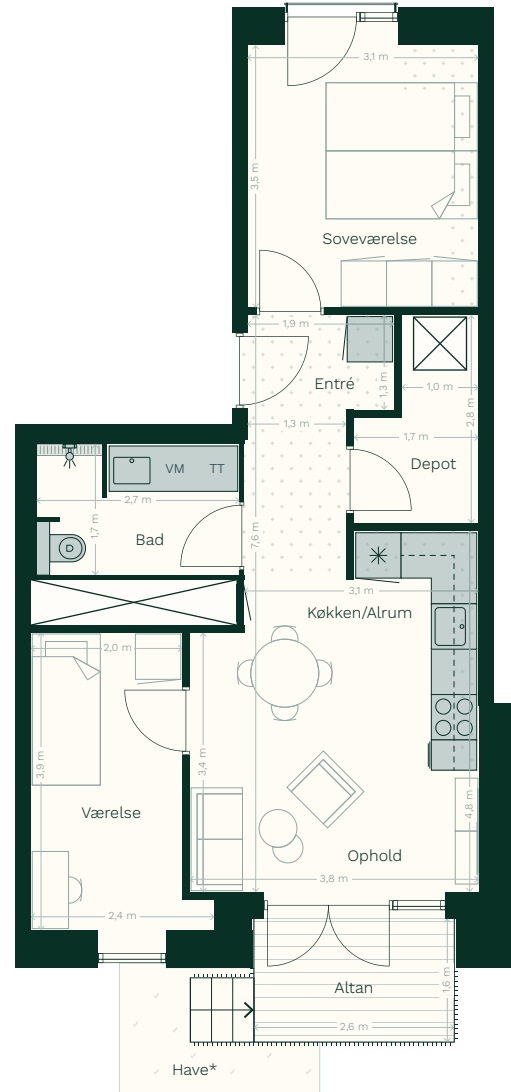
BOLIGTYPE LH.2V.03(A)

BOLIGNUMMER 1

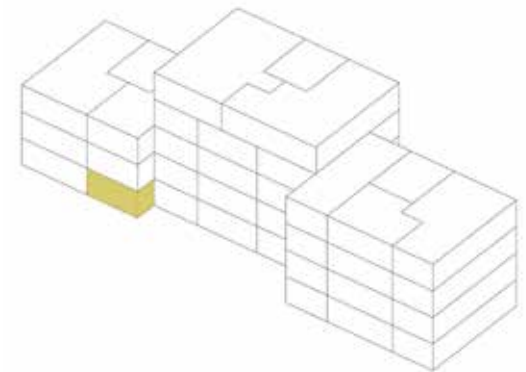
BRUTTOAREAL 75 M²
 ANTAL VÆRELSESR 3
 ALTAN 4 M²
 NIVEAU STUEN

SIGNATURFORKLARING

-  Komfur
-  Kølefryseskab
-  Vask
-  Opvaskemaskine
-  Overskabe
-  Vaskemaskine
-  Tørretumbler
-  Teknik
-  Indretningsforslag
-  Nedhængt loft/rørkasse



PLACERING



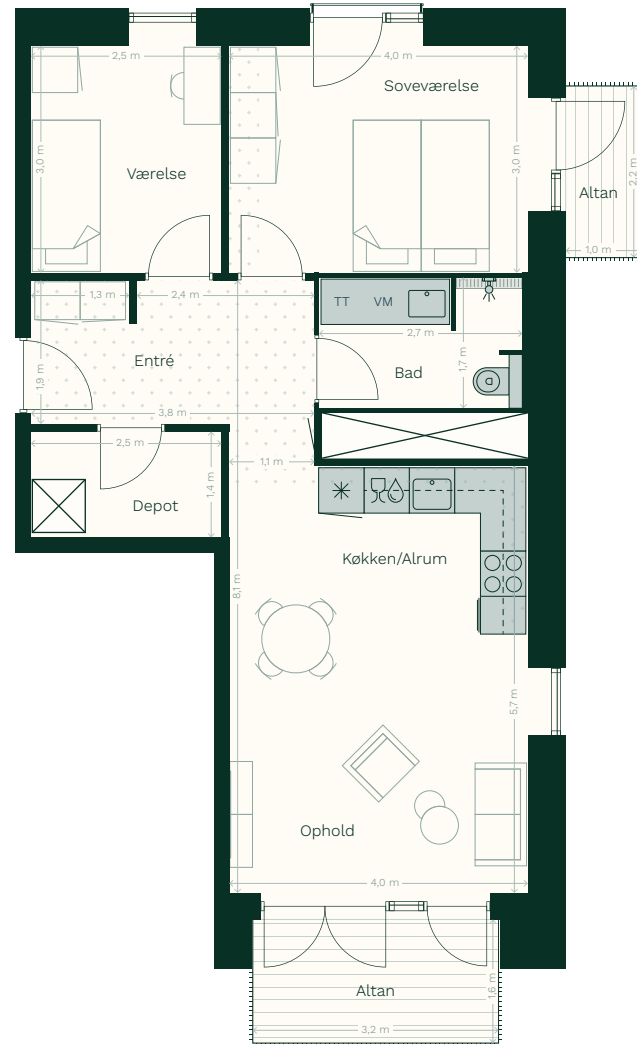
BOLIGTYPE LH.3V.01

BOLIGNUMMER 24, 27 & 30

BRUTTOAREAL 84 M²
 ANTAL VÆRELSESR 3
 ALTAN 5+2 M²
 NIVEAU 1. SAL / 2. SAL / 3. SAL

SIGNATURFORKLARING

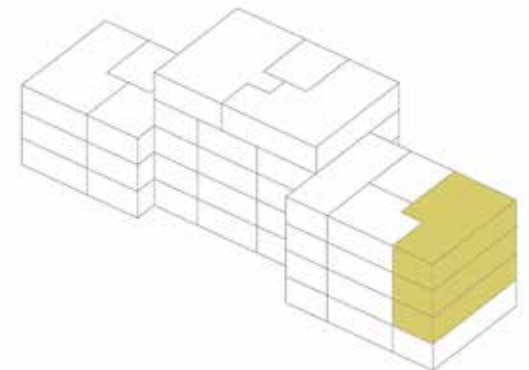
-  Komfur
-  Kølefryseskab
-  Vask
-  Opvaskemaskine
-  Overskabe
-  Vaskemaskine
-  Tørretumbler
-  Teknik
-  Indretningsforslag
-  Nedhængt loft/rørkasse



Udeareal kan variere.
 Boligtypen fås med enten en eller to altaner



PLACERING









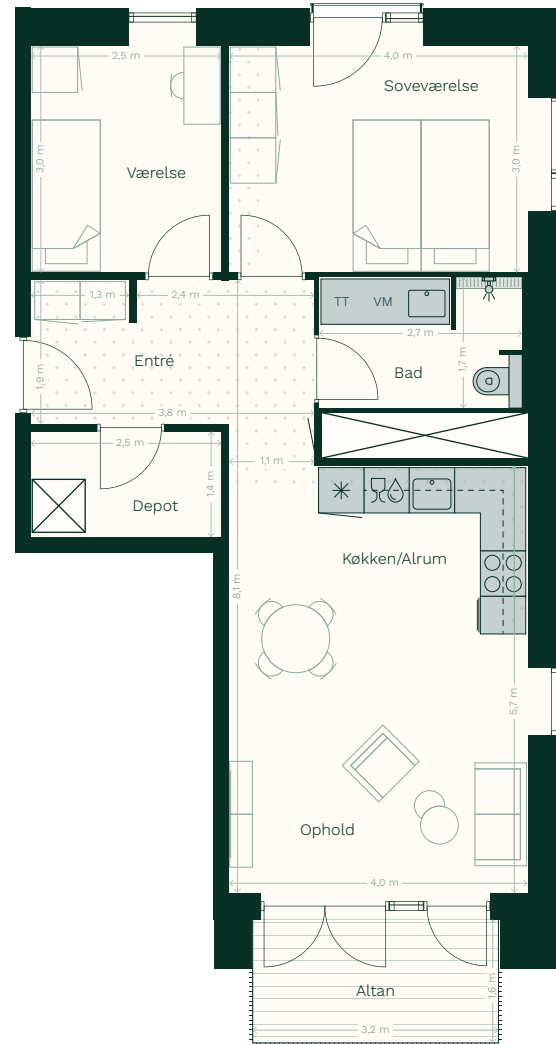
BOLIGTYPE LH.3V.01(A)

BOLIGNUMMER 21

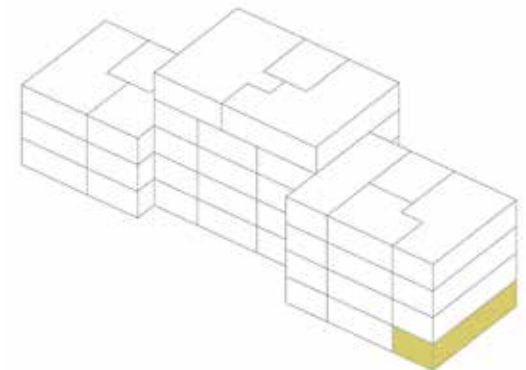
BRUTTOAREAL 84 M²
 ANTAL VÆRELSESR 3
 ALTAN 5 M²
 NIVEAU STUEN

SIGNATURFORKLARING

-  Komfur
-  Kølefryseskab
-  Vask
-  Opvaskemaskine
-  Overskabe
-  Vaskemaskine
-  Tørretumbler
-  Teknik
-  Indretningsforslag
-  Nedhængt loft/rørkasse



PLACERING









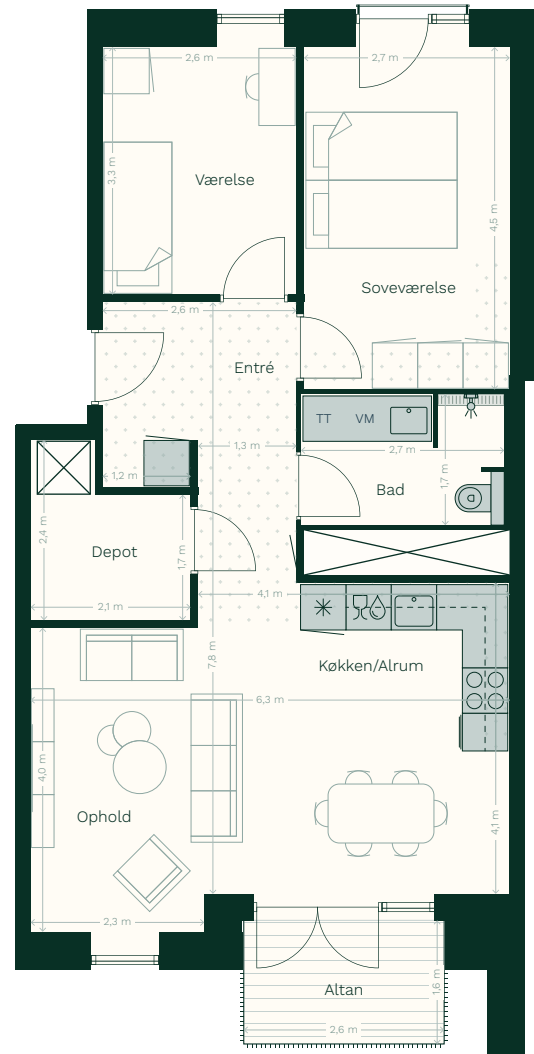
BOLIGTYPE LH.3V.02

BOLIGNUMMER 10, 13 & 16

BRUTTOAREAL 87 M²
 ANTAL VÆRELSESR 3
 ALTAN 4 (2 + 4) M²
 NIVEAU 1. SAL / 2. SAL / 3. SAL

SIGNATURFORKLARING

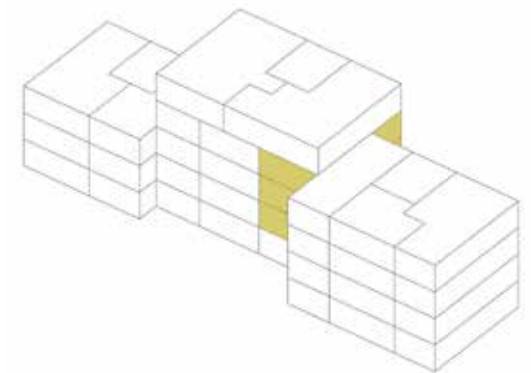
-  Komfur
-  Kølefryseskab
-  Vask
-  Opvaskemaskine
-  Overskabe
-  Vaskemaskine
-  Tørretumbler
-  Teknik
-  Indretningsforslag
-  Nedhængt loft/rørkasse



Boligtypen fås med enten en eller to altaner.



PLACERING













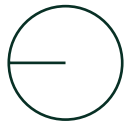
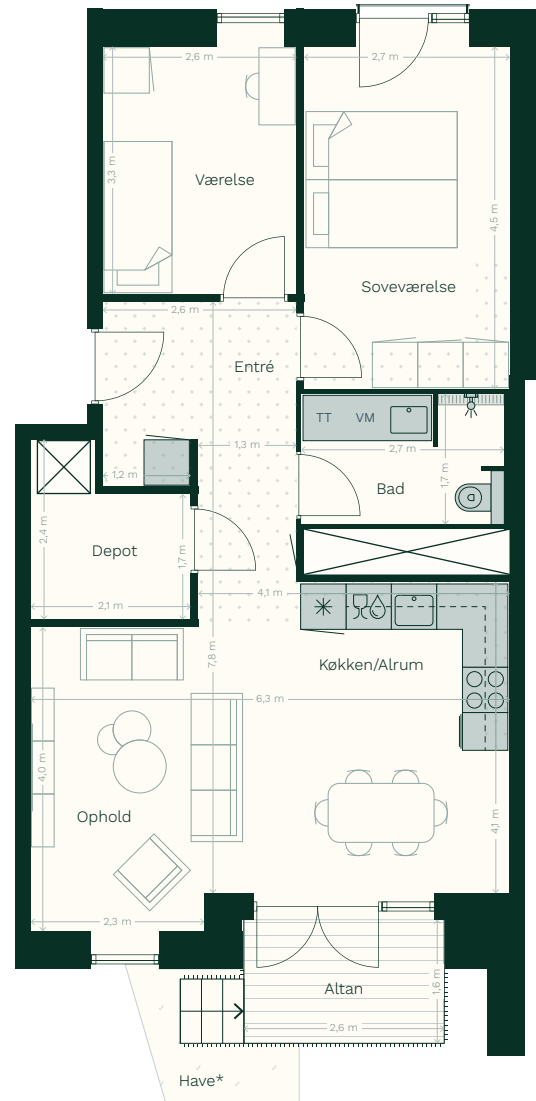
BOLIGTYPE LH.3V.02(T)

BOLIGNUMMER 7

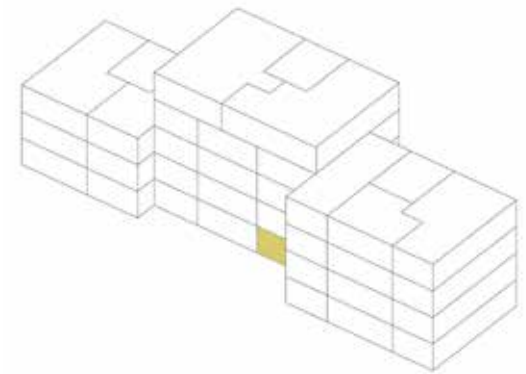
BRUTTOAREAL 87 M²
 ANTAL VÆRELSESR 3
 ALTAN 4 M²
 HAVE 3 M²
 NIVEAU STUEN

SIGNATURFORKLARING

-  Komfur
-  Kølefryseskab
-  Vask
-  Opvaskemaskine
-  Overskabe
-  Vaskemaskine
-  Tørretumbler
-  Teknik
-  Indretningsforslag
-  Nedhængt loft/rørkasse



PLACERING








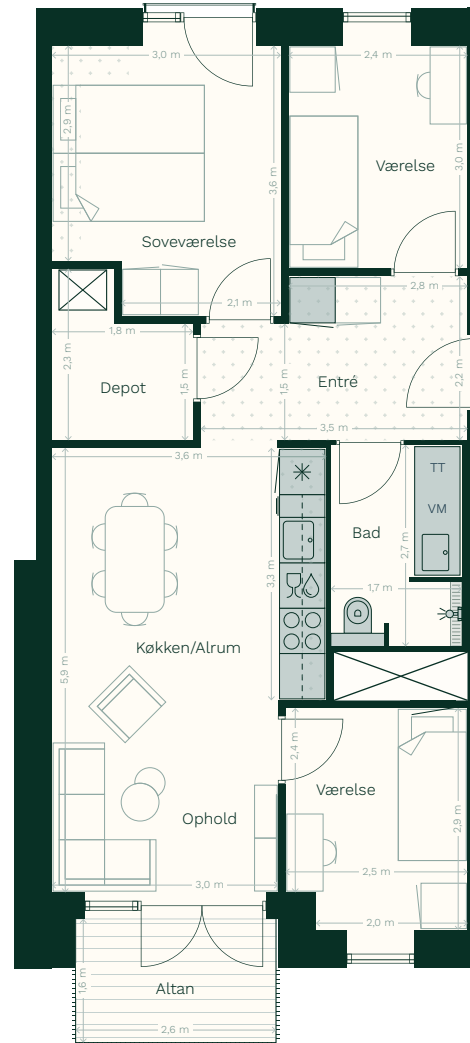
BOLIGTYPE LH.4V.01

BOLIGNUMMER 26, 29 & 32

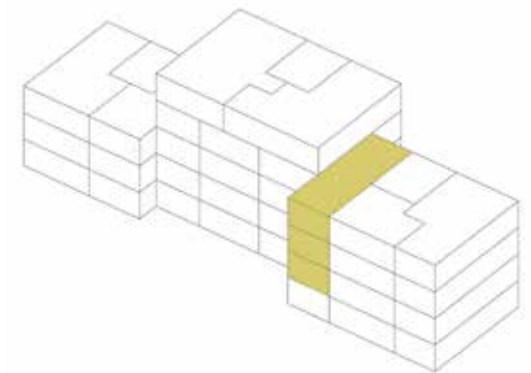
BRUTTOAREAL 82 M²
 ANTAL VÆRELSESR 4
 ALTAN 4 M²
 NIVEAU 1. SAL / 2. SAL / 3. SAL

SIGNATURFORKLARING

-  Komfur
-  Kølefryseskab
-  Vask
-  Opvaskemaskine
-  Overskabe
-  Vaskemaskine
-  Tørretumbler
-  Teknik
-  Indretningsforslag
-  Nedhængt loft/rørkasse



PLACERING









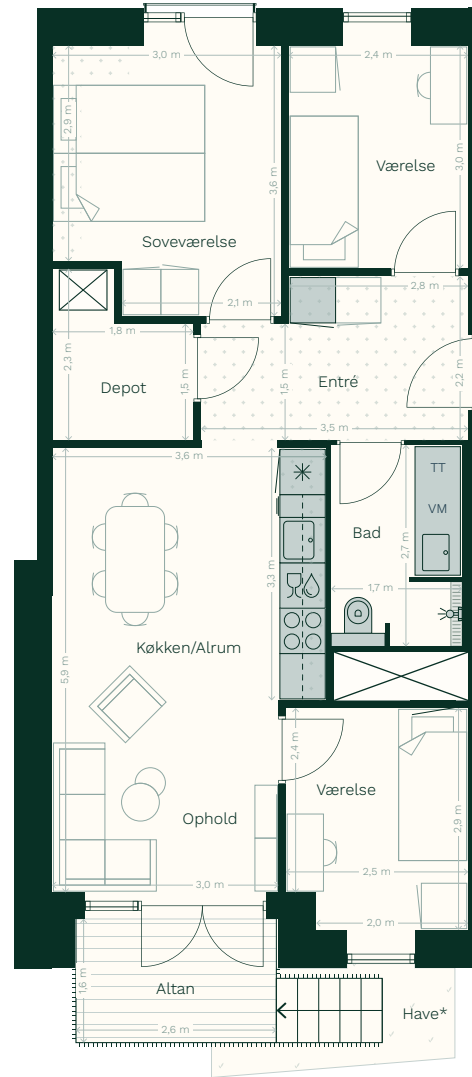
BOLIGTYPE LH.4V.01(A)

BOLIGNUMMER 23

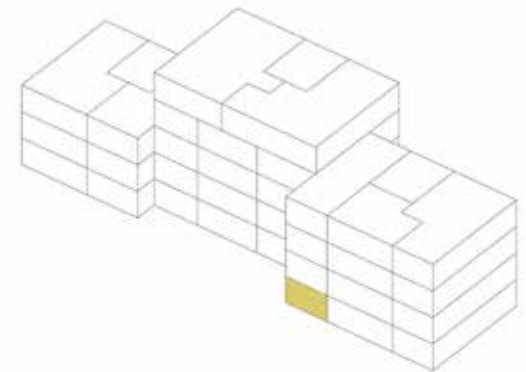
BRUTTOAREAL 82 M²
 ANTAL VÆRELSESR 4
 ALTAN 4 M²
 NIVEAU STUEN

SIGNATURFORKLARING

-  Komfur
-  Kølefyreskab
-  Vask
-  Opvaskemaskine
-  Overskabe
-  Vaskemaskine
-  Tørretumbler
-  Teknik
-  Indretningsforslag
-  Nedhængt loft/rørkasse



PLACERING









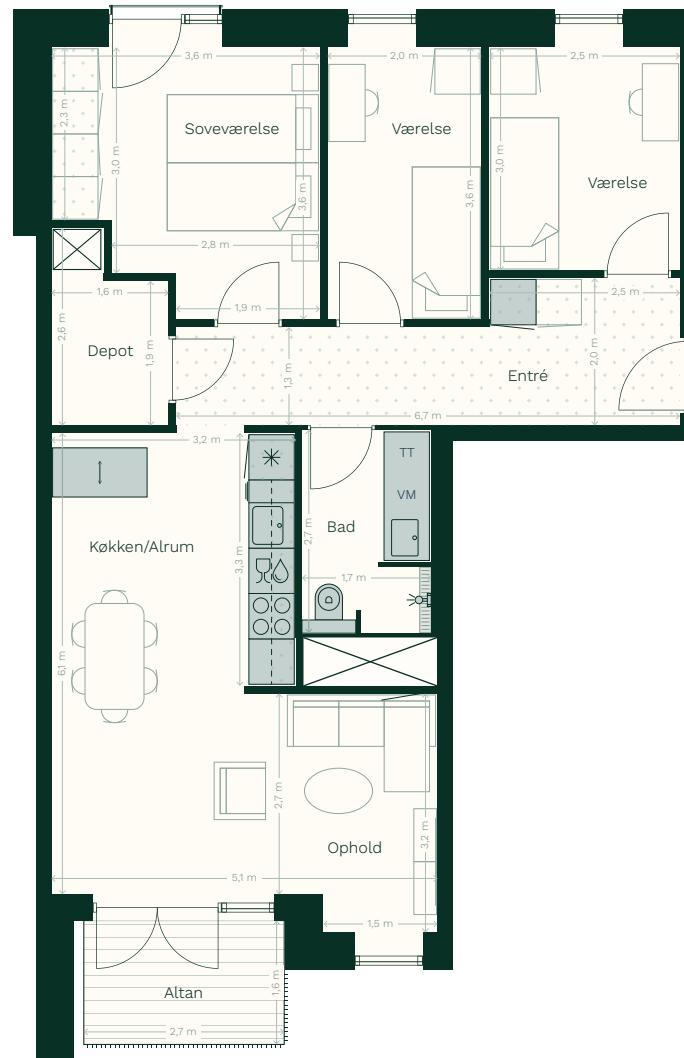
BOLIGTYPE LH.4V.02

BOLIGNUMMER 12 & 15

BRUTTOAREAL 94 M²
 ANTAL VÆRELSESR 4
 ALTAN 5 (5 + 2) M²
 NIVEAU 1. SAL / 2. SAL

SIGNATURFORKLARING

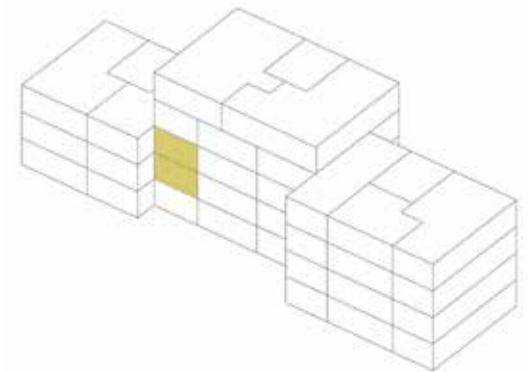
-  Komfur
-  Kølefryseskab
-  Vask
-  Opvaskemaskine
-  Overskabe
-  Vaskemaskine
-  Tørretumbler
-  Teknik
-  Indretningsforslag
-  Nedhængt loft/rørkasse



Boligtypen fås med enten en eller to altaner.



PLACERING














Vejledende visualisering. Der tages forbehold for fejl og ændringer.

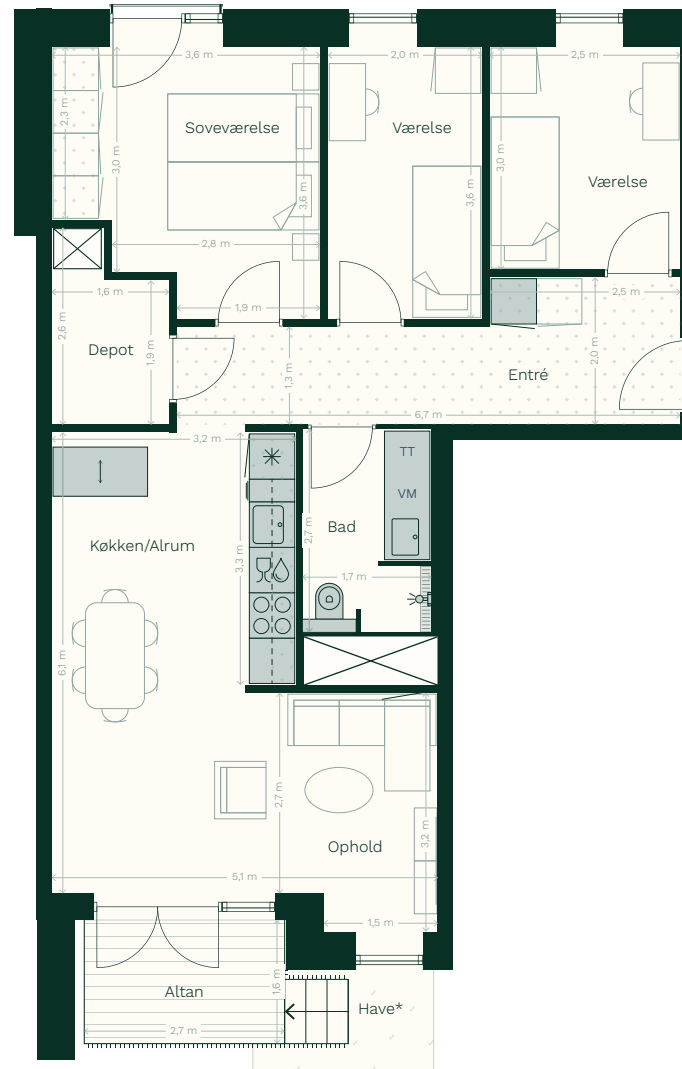
BOLIGTYPE LH.4V.02(A)

BOLIGNUMMER 9

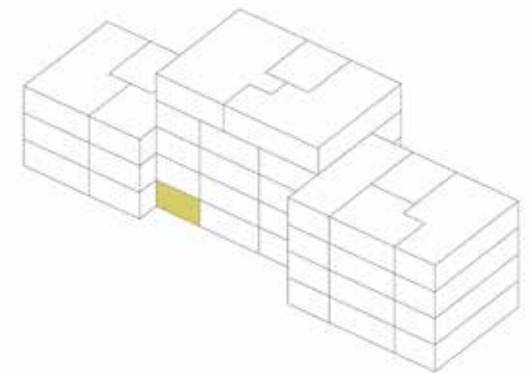
BRUTTOAREAL 94 M²
 ANTAL VÆRELSE 4
 ALTAN 5 M²
 HAVE 3 M²
 NIVEAU STUEN

SIGNATURFORKLARING

-  Komfur
-  Kølefryseskab
-  Vask
-  Opvaskemaskine
-  Overskabe
-  Vaskemaskine
-  Tørretumbler
-  Teknik
-  Indretningsforslag
-  Nedhængt loft/rørkasse



PLACERING



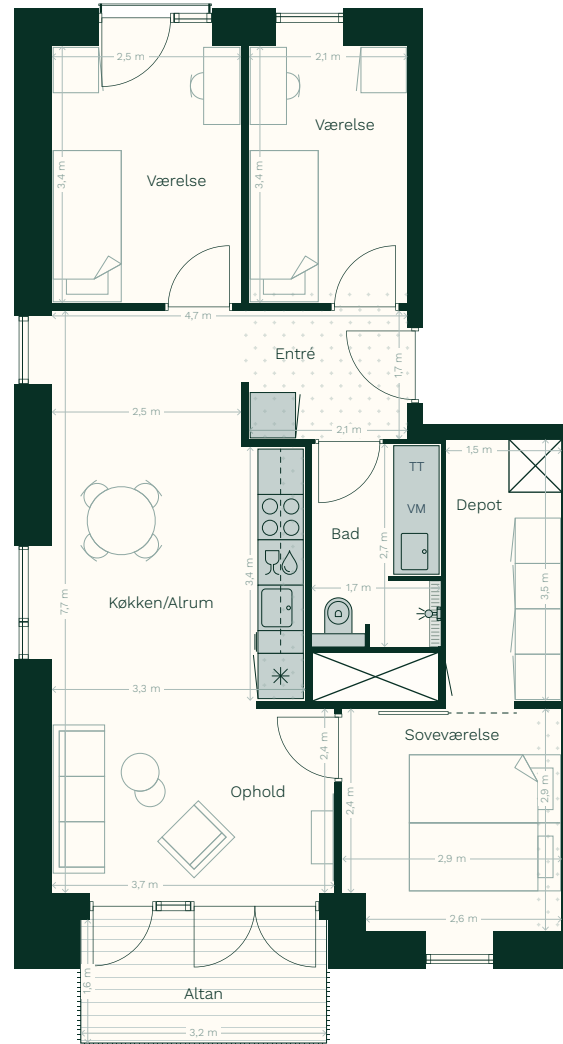
BOLIGTYPE LH.4V.03

BOLIGNUMMER 4 & 6

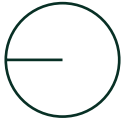
BRUTTOAREAL 93 M²
 ANTAL VÆRELSESR 4
 ALTAN 5 (5 + 2) M²
 NIVEAU 1. SAL / 2. SAL

SIGNATURFORKLARING

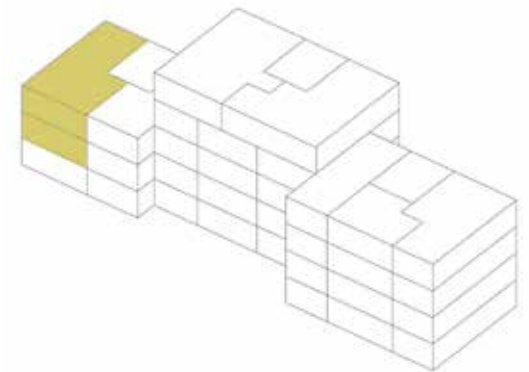
-  Komfur
-  Kølefryseskab
-  Vask
-  Opvaskemaskine
-  Overskabe
-  Vaskemaskine
-  Tørretumbler
-  Teknik
-  Indretningsforslag
-  Nedhængt loft/rørkasse



Boligtypen fås med enten en eller to altaner.



PLACERING












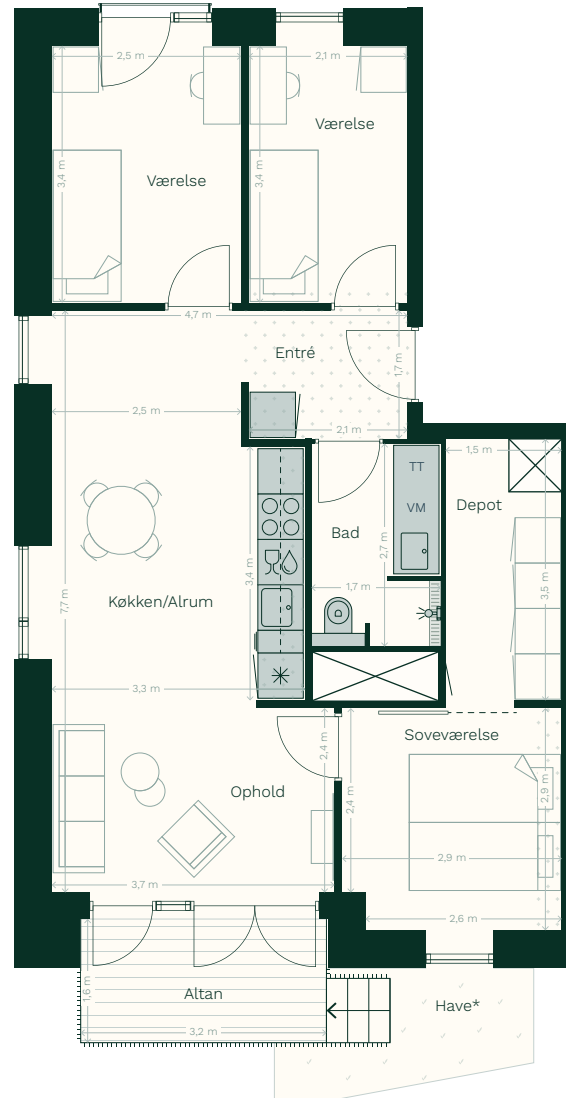
BOLIGTYPE LH.4V.03(A)

BOLIGNUMMER 2

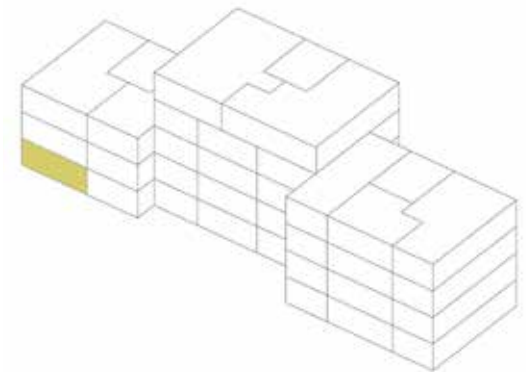
BRUTTOAREAL 93 M²
 ANTAL VÆRELSE 4
 ALTAN 5 M²
 HAVE 5 M²
 NIVEAU STUEN

SIGNATURFORKLARING

-  Komfur
-  Kølefryseskab
-  Vask
-  Opvaskemaskine
-  Overskabe
-  Vaskemaskine
-  Tørretumbler
-  Teknik
-  Indretningsforslag
-  Nedhængt loft/rørkasse



PLACERING













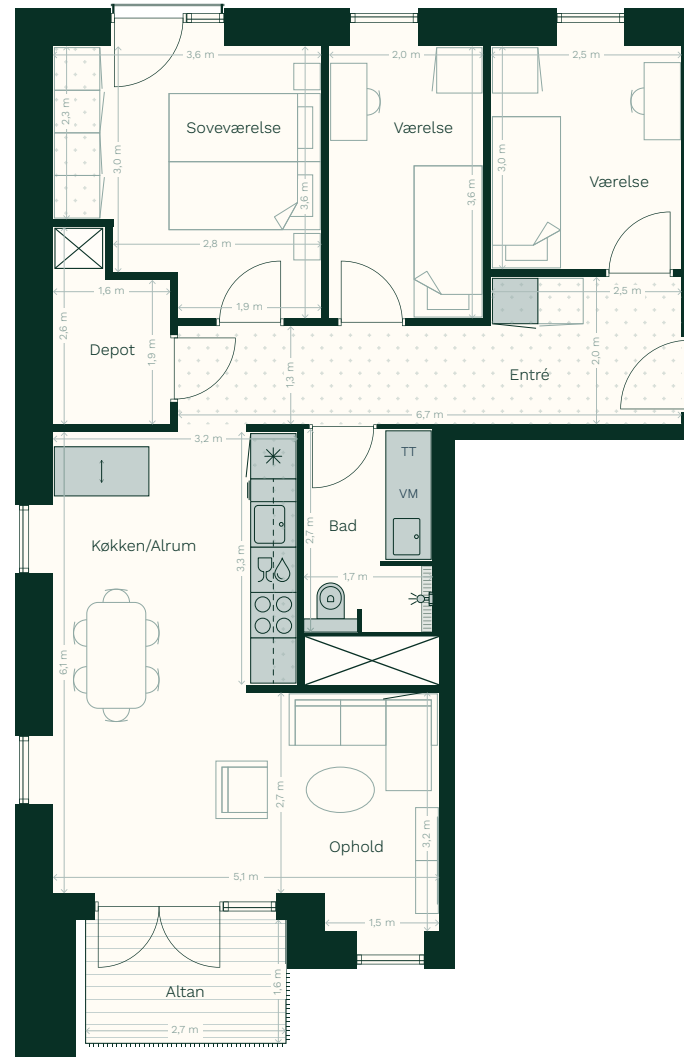
BOLIGTYPE LH.4V.04

BOLIGNUMMER 18

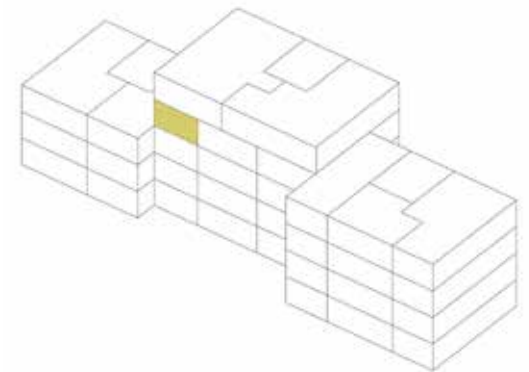
BRUTTOAREAL 98 M²
 ANTAL VÆRELSESR 4
 ALTAN 4 M²
 NIVEAU 3. SAL

SIGNATURFORKLARING

-  Komfur
-  Kølefryseskab
-  Vask
-  Opvaskemaskine
-  Overskabe
-  Vaskemaskine
-  Tørretumbler
-  Teknik
-  Indretningsforslag
-  Nedhængt loft/rørkasse



PLACERING







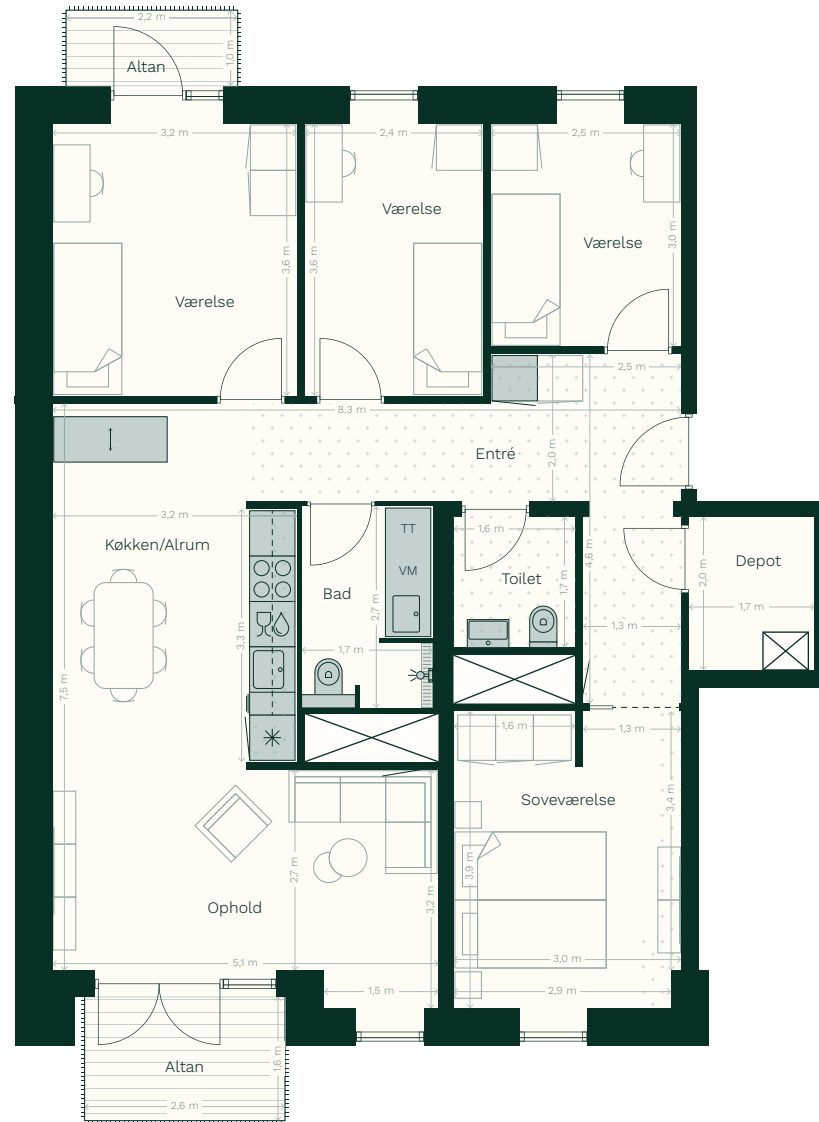
BOLIGTYPE LH.4V.05

BOLIGNUMMER 20

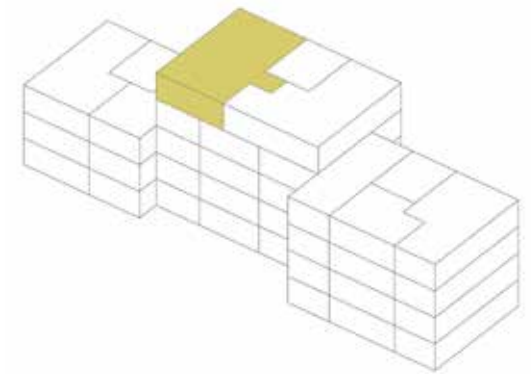
BRUTTOAREAL 125 M²
 ANTAL VÆRELSE 5
 ALTAN 4+2 M²
 NIVEAU 4. SAL

SIGNATURFORKLARING

-  Komfur
-  Kølefyreskab
-  Vask
-  Opvaskemaskine
-  Overskabe
-  Vaskemaskine
-  Tørretumbler
-  Teknik
-  Indretningsforslag
-  Nedhængt loft/rørkasse



PLACERING









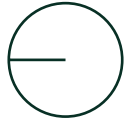
BOLIGTYPE LH.4V.06

BOLIGNUMMER 19

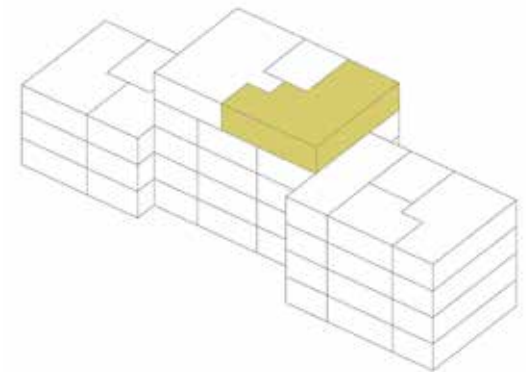
BRUTTOAREAL 113 M²
 ANTAL VÆRELSE 4
 ALTAN 4+5+2 M²
 NIVEAU 4. SAL

SIGNATURFORKLARING

-  Komfur
-  Kølefryseskab
-  Vask
-  Opvaskemaskine
-  Overskabe
-  Vaskemaskine
-  Tørretumbler
-  Teknik
-  Indretningsforslag
-  Nedhængt loft/rørkasse



PLACERING



MATERIALER





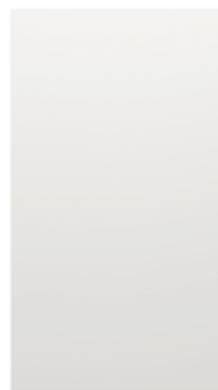
KØKKEN



INVITA
SKABSELEMENT



INVITA
SKUFFEELEMENT



INVITA
SKABSLÅGE



INVITA
KOMPAKTLAMINATBORDPLADE



INVITA
BØJLEGREB



HANS GROHE
ARMATUR



INVITA
VASK

KØKKEN



ELECTROLUX
INDBYGNINGSOVN
MED VARMLUFT



ELECTROLUX
KØGESEKTION



ELECTROLUX
KØLEFRYSESKAB



ELECTROLUX
OPVASKEMASKINE

BADEVÆRELSE



MARAZZI
ESSAY FLISE



HTH
VASKESKAB



GROHE
CONCETTO BLANDINGSBATTERI



INVITA
SOLID SURFACE VASK

BADEVÆRELSE



GROHE
TEMPESTA COSMOPOLITAN
BRUSESÆT



CASSØE AQUALUX
TOILETSÆDE



ELECTROLUX
VASKEMASKINE



ELECTROLUX
TØRRETUMBLER

GULVE



RAW

3-STAVS PARKETGULV
I EG



RØLLIKEBAKKEN

LEJLIGHEDER I SØBAKKEHUSENE

WWW.SØBAKKEHUSENE.DK

 LokalBolig
PROJEKT


KONCERNEN

ARKITEMA
ARCHITECTS

COWI